

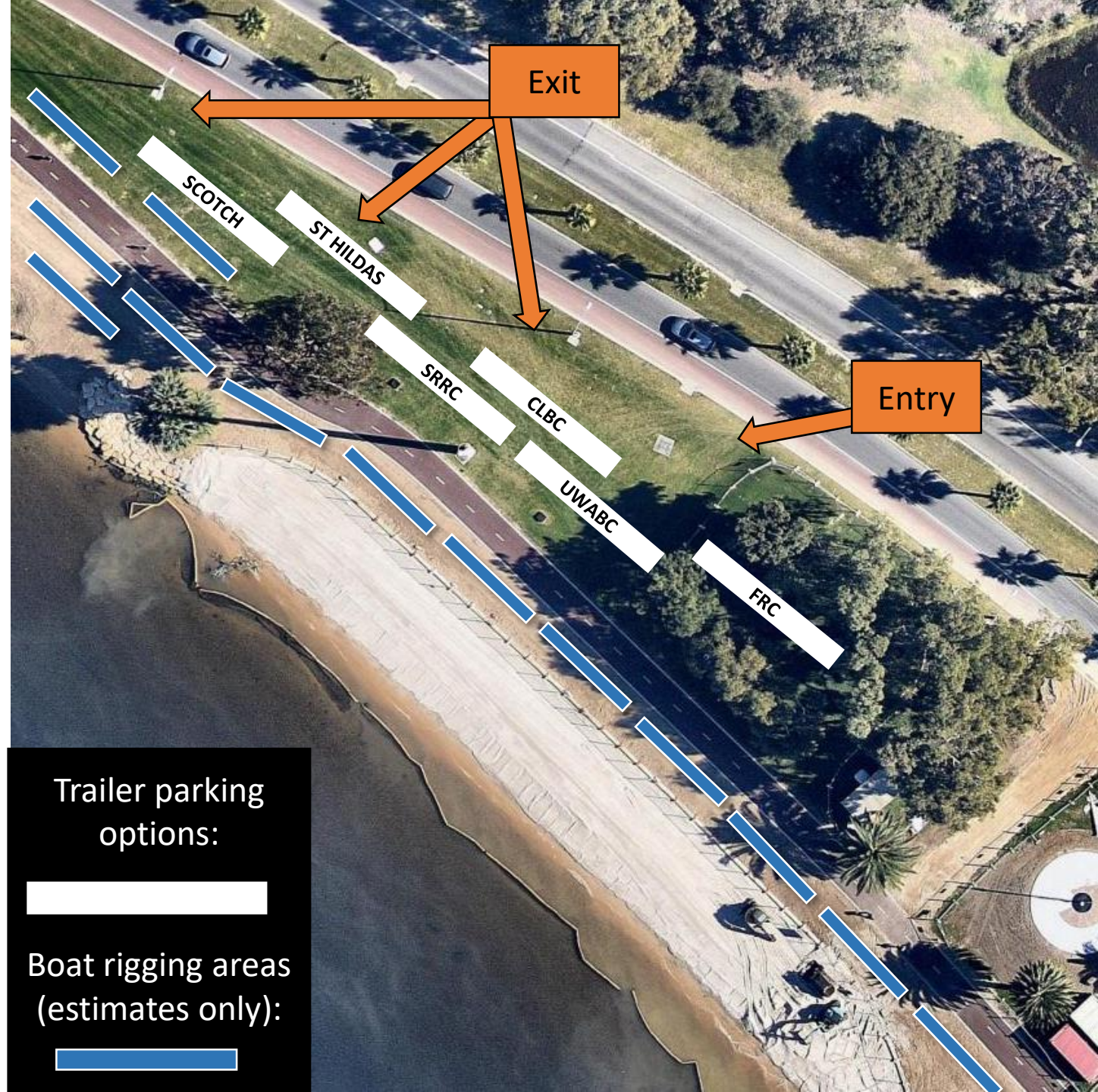
EQ Sprint Regatta Parking Plan & Instructions

Arrival Times:

SRRC	9:00am - 10:00am
SCOTCH	9:00am - 10:00am
UWABC	9:00am - 10:00am
FRC	After 9am
CLBC	After 10:00am
ST HILDAS	After 10:00am

Arrival Process:

- Driver to contact Jen Matthies on 0439 801 070 when you are 10 minutes from the Launch Area
- When within 200m of the Launch Area put your hazard lights on
- Follow directions from Jen to your allocated parking location
- Collect a parking pass from Jen and place on dashboard
- Refer to the transport and Rigging Area Plan for a detailed description



Trailer parking options:

Boat rigging areas (estimates only):

Departure Times:

Dependant on crew progressions however SCOTCH only has a men's crew so will be out first

Departure Process:

- Find or contact Jen to advise her that you are ready to depart.
- Provide your parking pass back to Jen
- Follow all directions from Jen or other event official to re-join the roadway

Following these rules is a requirement under our authority to utilise this reserve.