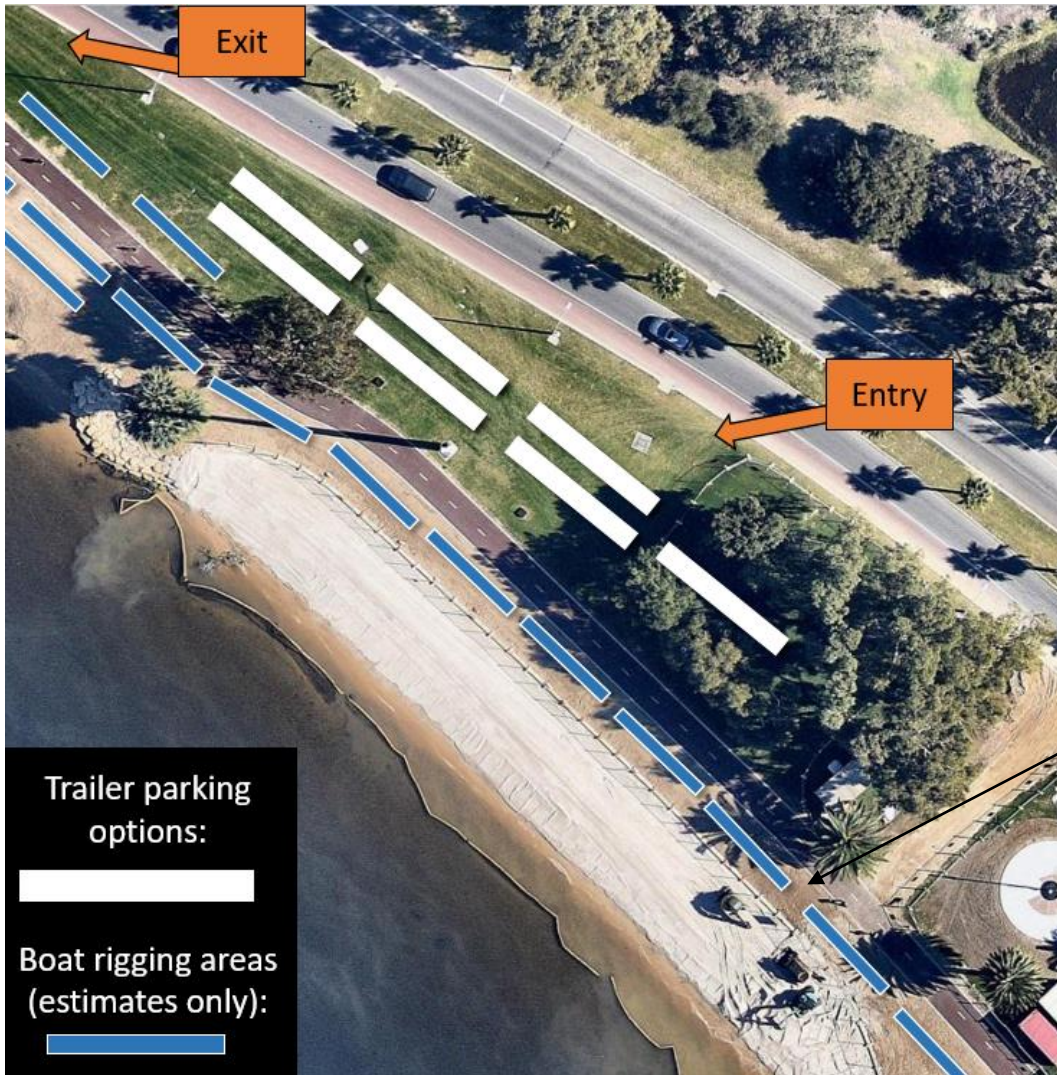




ELIZABETH QUAY ROWING REGATTA

BOAT TRANSPORT and RIGGING AREA PLAN



For the Elizabeth Quay Sprint Regatta to be held on Saturday 2nd September, rowing boats can be launched from the beach located in between Elizabeth Quay and the Narrows bridge. For those crews wishing to utilise this launching site the following information outlines the procedure for Trailer Parking and to ensure you have consideration for the local road and walking path users.

Please note that the area between the cycle path and the beach has since had grass installed.

Trailer Parking Area Entry Point: Drivers are requested to contact the Launch Area Marshal when they are less than 10 minutes away from the launch area so

Entry to the Trailer Parking Area is via Riverside Drive (western side of Elizabeth Quay) approximately midway between Elizabeth Quay and the Narrows Bridge. You will need to approach this area from the eastern (Elizabeth Quay) end of Riverside Drive. If you are approaching from the western end of Riverside Drive (Narrows bridge end) turn left before the Narrows bridge (at the round-about) and make your way around the convention centre and turn right onto Riverside Drive at Elizabeth Quay.

As you approach the entry point put your hazard lights on to warn following vehicles that you are slowing down and exiting the roadway. From the image above you will see that you will cross the emergency lane before exiting Riverside Drive. As you approach the turn off point there will be an Event Marshal (hence the need to advise of your impending arrival) who will guide you to your allocated parking spot. The Entry Point, as indicated above and shown below is just after the cluster of trees. If you can see that there is not sufficient space for your vehicle and trailer to exit Riverside Drive then please do not exit or park in the emergency lane alongside Riverside Drive. Continue driving and do another lap of the block and contact the Launch Area Marshal for further details.

When you exit Riverside Drive onto the reserve itself, be conscious of the:

- sloped gutter: Exit the roadway very slowly so as not to damage equipment when mounting the sloped gutter
- sloped reserve area: The greatest decline is immediately after you enter the reserve. It then levels out somewhat, however there is a slight slope (from road to river) across most of the reserve.



Trailer Parking Zone:

The seven parking spaces will be specifically allocated to trailering clubs/schools based on number of crews and timing of events. Clubs/schools will be provided a specific arrival time to ensure appropriate use of the limited space. It is important that drivers arrive as close as possible to these allocated times as possible.

To provide sufficient space for as many club/school trailers as possible, vehicles will need to follow all directions from the Launch Area Marshal which may include moving your trailer forward to create more space for others behind you at times.

When pulling up behind another trailer please leave enough space for them to unload their boats.

Prior to your arrival please ensure you have organised enough assistance to unload your trailer as quickly and efficiently as possible.

Trailer Parking Area Exit Process: Please advise the Launch Area Marshal when you are ready to depart the launch area as they will coordinate this process and assist with re-entry onto Riverside Drive. Just prior to returning on to Riverside Drive you will again cross the emergency lane. Take extreme caution when swinging back on to the roadway.



Boat Rigging: As indicated by the green shaded area on the map there is suitable space to rig many boats on the southeast side of Riverside Drive. All crews must ensure they are not obstructing any pedestrian/cycle path when rigging boats. Boats should be carried parallel to the bike path to ensure minimal blockage of this area when moving to and from the beach for launching. The coxswain of each crew should check the bike path is clear before allowing the boat to cross. All rowers and volunteers should always check both directions before crossing the path even when not carrying a boat or equipment. Crews need to ensure they are not rigging boats in allocated trailer parking areas. Crews should consult the Launch Area Marshal to confirm where they can rig their boats. If the trailer parking area is free then the parking attendant will notify your club that this area can be utilised for rigging.

Non-Trailer Boats: For those crews that row boats to the Elizabeth Quay regattas there will be ample space to bring your boats to shore at the beach between Elizabeth Quay and the Narrows Bridge. Obviously you will need to organise trestles if you wish to remove your boat from the water prior to your events. Remember, it is each crews' responsibility to be at Marshalling Area 1 a minimum of 10 minutes prior to their required start time.

Additional Trailer Parking: At this stage there is only sufficient space to park 7 trailers in the designated parking area. If more than 7 clubs or schools wish to park trailers in this area then there may need to be a trailer sharing arrangement. In this case please register your interest to park a trailer by emailing Lachlan Chapman at operations@owingwa.asn.au no later than C.O.B Tuesday 29th August.

